

CERTIFICATE OF LOCATION OF GOVERNMENT CORNER

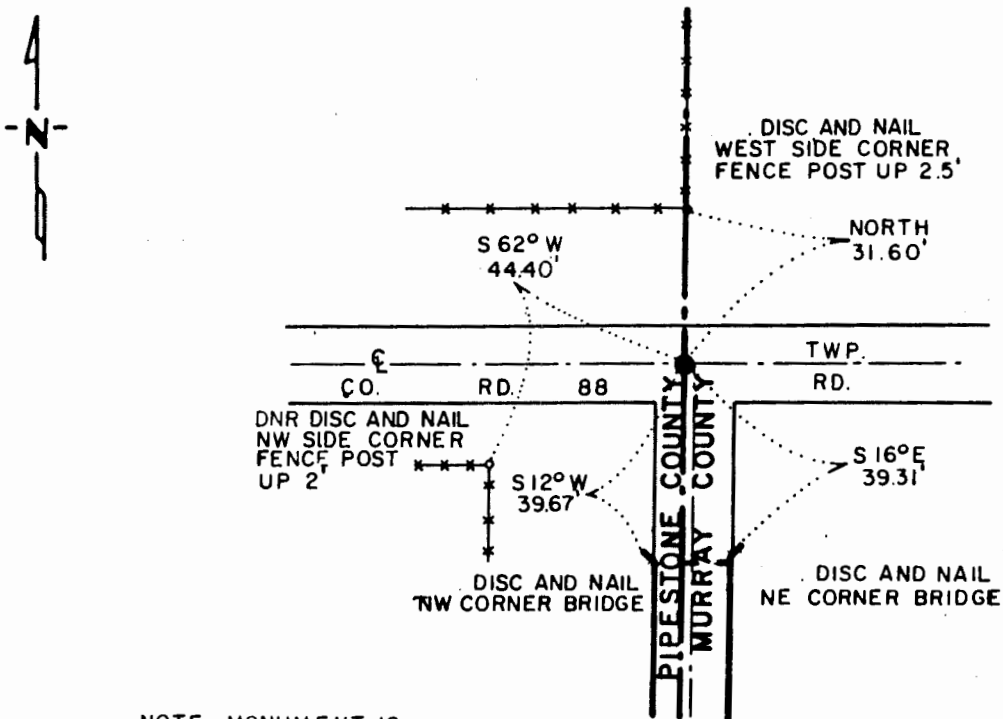
NORTHWEST Corner of Section 7, Township 108 N., Range 43 W., 5th P.M.

STATE OF MINNESOTA, County of MURRAY

At the corner location shown on the sketch:

- On 6-29-82 found a 1 1/2" x 24" IRON PIPE, DOWN 32"
DATE
- left monument as found, lowered monument, removed monument (explain)
- On 6-29-82 placed a 1 1/4" x 1 1/4" x 20" PERFORATED STEEL TUBE WITH
DATE ALUMINUM CAP STAMPED "DNR SURVEY MARKER", DOWN 0.5'

SKETCH OF REFERENCE TIES



NOTE: MONUMENT IS
1' W OF FENCE N
1' W OF C RD. S
ON C E-W RD.

TIES TAKEN 8-5-86
BEARINGS OBSERVED WITH COMPASS

Statement of evidence relative to this corner location is on back of page.

J.A.G. 8-18-86
FILE G-202

I hereby certify that this document and the data contained herein was prepared by me or under my direct supervision.

Lowell B. Pommeroy 9-10-86
SIGNATURE DATE

Registration No. 17005
 Land Surveyor, Professional Engineer
 County Surveyor, County Engineer

OFFICE OF THE COUNTY RECORDER

County of _____

I hereby certify that this document was filed in the Co. Recorders office at _____ M. on the _____ day of _____ A.D., 19 _____

County Recorder _____

By _____, Deputy

DOCUMENT NO. _____

Northwest Corner Section 7, Township 108 North, Range 43 West

This corner was originally established by the U. S. General Land Office survey in 1861. The government notes show corner marked with a wood post set in mound of earth with pits and trench dug around the mound also deposited charcoal.

In June 1982, the DNR Bureau of Engineering contacted the following for corner information:

Murray County Offices of the Recorder and Highway Engineer
Pipestone County Office of the Recorder

The following information was obtained from the Pipestone County Recorder's Office:

Surveyor's Record Book B, on page 184, contains a survey by J. W. Pierce, County Surveyor, dated June 8, 1916. Survey states, "dug and found old buffalo head and several pieces of old rotten wood, indication of old government corner. Said corner agrees closely with center of graded roads both ways and with property lines." Pierce goes on to state, "Set a gas pipe 1-1/2" by 24" to mark corner. Said corner agrees closely with testimony of Pete Olson, an old settler in Murray County."

The following information was obtained from the Murray County Highway Engineer's Office:

Surveyor's Record Book contains a survey of Section 7, by J. W. Woolstencroft, County Surveyor, date not indicated. Survey shows this corner 2514 ft. from the north quarter corner Section 7, but does not indicate what was found or set. Ties were taken:

fence corner, southwest 46.6 ft.
fence corner northeast 39.5 ft.
power line east, 31.0 ft. north

The following information was obtained from the Pipestone County Recorder's Office:

A certificate of location of government corner, dated August 11, 1975, signed by Dennis Stoeckman, Highway Engineer, shows an iron pipe was found at the corner. Stoeckman set another iron pipe at the corner and took ties:

bottle cap and nail in fence post 44.2 ft. N.W.
bottle cap and nail in fence post corner 31.7 ft. North
bottle cap and nail in fence post 41.1 ft. N.E.
nail and disc in bridge 39.2 ft. S.E.
nail and disc in bridge 39.6 ft. S.W.

In June 1982, the DNR Bureau of Engineering traversed to the area of the corner and found a 1" inside diameter by 6" iron pipe, down 2", over a 3/4" by 24" iron rod. Continued to excavate and found a 1-1/2" inside diameter by 24" iron axle type pipe, down 32" at natural ground. This pipe had prong like pieces extending from it. The axle type pipe was not directly under the other found monuments. Left the axle type iron as found, and set a DNR Survey Marker over it. Searched for and found record ties as shown. The axle iron measures:

2522.68 ft. from the north quarter corner Section 7
2655.77 ft. from the west quarter corner Section 7

Accept the axle type iron as the location of the corner.

Traverse information is available from the DNR Bureau of Engineering.

On August 5, 1986, revisited the corner and found the DNR Survey Marker as previously set in good condition and took ties as shown.